



Muzafar Mohiuddin

•Interiors •Furniture •Renovation







## The Dancing Ruse

Here the stoic rosewood top successfully tames the dancing hoopstands into confinement. These are handwelded cast iron hoops, finished in gold paint, a little stylish anarchy helps to contemporize any space



# Medieval Affair



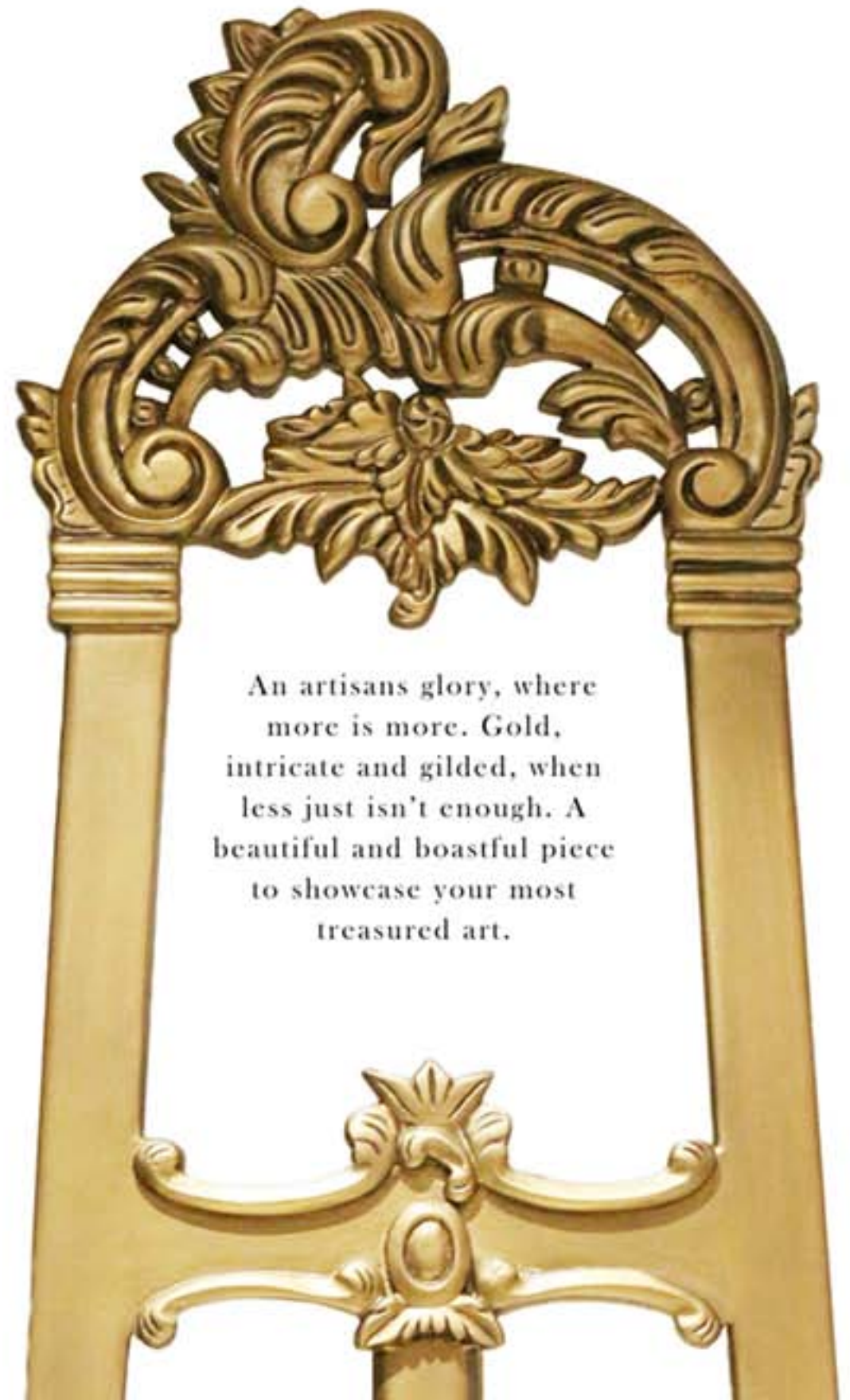
A Medieval Affair  
This renaissance  
inspired piece is an ode  
to the tremendous  
marquetry skills and  
aesthetic of the 17  
century. With our very  
own artisans bringing  
this skill to life, in a  
hypnotic masterpiece.







## Artist's Glory



An artisans glory, where  
more is more. Gold,  
intricate and gilded, when  
less just isn't enough. A  
beautiful and boastful piece  
to showcase your most  
treasured art.

Here we present the Baroness, retaining the quintessential qualities of a chesterfield, however finer, with finer detailing. A delicate mahogany undercarriage, against the nude tan, is perfectly warm and inviting, while the details of gold studs and brass wheels attached to carved seemingly frail legs, ooze the touch of luxury. This design expands outwards and gives more seating space as well as room to maneuver



## The Baroness





# Crowning Wreath

There is meticulous craftsmanship that has gone into this piece, various levels of carving, design and texture. The hand carved wreath is it's crowning glory, while the black French polish deepens the effect of the antique gold, also producing a marble like effect on the frame, altogether an alluring finish.









## Mademoiselle

This sharp and peircing cross legged contemplation will draw anyone in. Made in rosewood and wicker, every edge and curve has been carved to perfection, she doesn't conform to her setting, they conform to her.

# Requiem for a tree

From folklore to fantasy, trees are celebrated around the world, here we preserve and celebrate their inherent glory. Here their majestic strength is displayed, through their natural grain, layers and density, whilst being supported and anchored by regal columns of solid brass.





This stunning Heron like chaise, is graceful, delicate and aloof, seemingly ready to take flight. With its dewy silver/grey fabric, encompassing the bronze rosewood frame, it is full of delectable carved details.

## The Heron





Beetlejuice

*... at the Ritz*



This idiosyncratic curved extravaganza has been carved to precision, a new take on the quintessential club chair. The frame and flow remains fluid throughout, however the print, might cause a double take.







A no fuss visual treat,  
where the hexagonal  
brass top perches on  
marble cylinders. This  
analytical formation  
echoes tranquility, a  
layer of evening gold  
rests atop serene  
murky skies.

## Hexagon Halo





# Austere

This leatherite, beige ottoman sits neatly in any setting, blending into its surroundings. A linear studded pattern holds down the leathirite, while wooden hooves secure it.





## Undulation de Console

This antique effect gold frame has been paired with a beautiful clouded grey white marble top. Here classic meets contemporary, where the traditional cavalry of slender stalks encapsulate and barricade the dangerous process of unravelling, that is underway.





## Stygian Herald

This monochromatic plinth, is resonant of the roman architectural deliverance.

A production of an exquisite linear narrative, corresponding with equally evocative carved detailing. Dramatic, intense and stately.





## THE PRUDE

Understated and elegant. This poised, rosewood frame is laden in plush champagne velvet, some simple hand stitched detailed and some angelic halos for the base of the legs to give it the exquisite finish.





# Muzafar Mohiuddin

•Interiors •Furniture •Renovation

MUZAFAR MOHIUDDIN DESIGN  
BUILDING 1A, SHAHID PLAZA,  
BLOCK R, JINNAH AVENUE,  
ISLAMABAD - 44000 - PAKISTAN.  
TEL: +92 51 8745037

EMAIL: [CONTACT@MUZAFARMOHIUDDIN.COM](mailto:CONTACT@MUZAFARMOHIUDDIN.COM)  
WEB: [WWW.MUZAFARMOHIUDDIN.COM](http://WWW.MUZAFARMOHIUDDIN.COM)  
[WWW.INSTAGRAM.COM/MUZAFAR\\_MOHIUDDIN\\_DESIGN](http://WWW.INSTAGRAM.COM/MUZAFAR_MOHIUDDIN_DESIGN)  
[WWW.FACEBOOK.COM/PAGES/MUZAFAR-MOHIUDDIN](http://WWW.FACEBOOK.COM/PAGES/MUZAFAR-MOHIUDDIN)